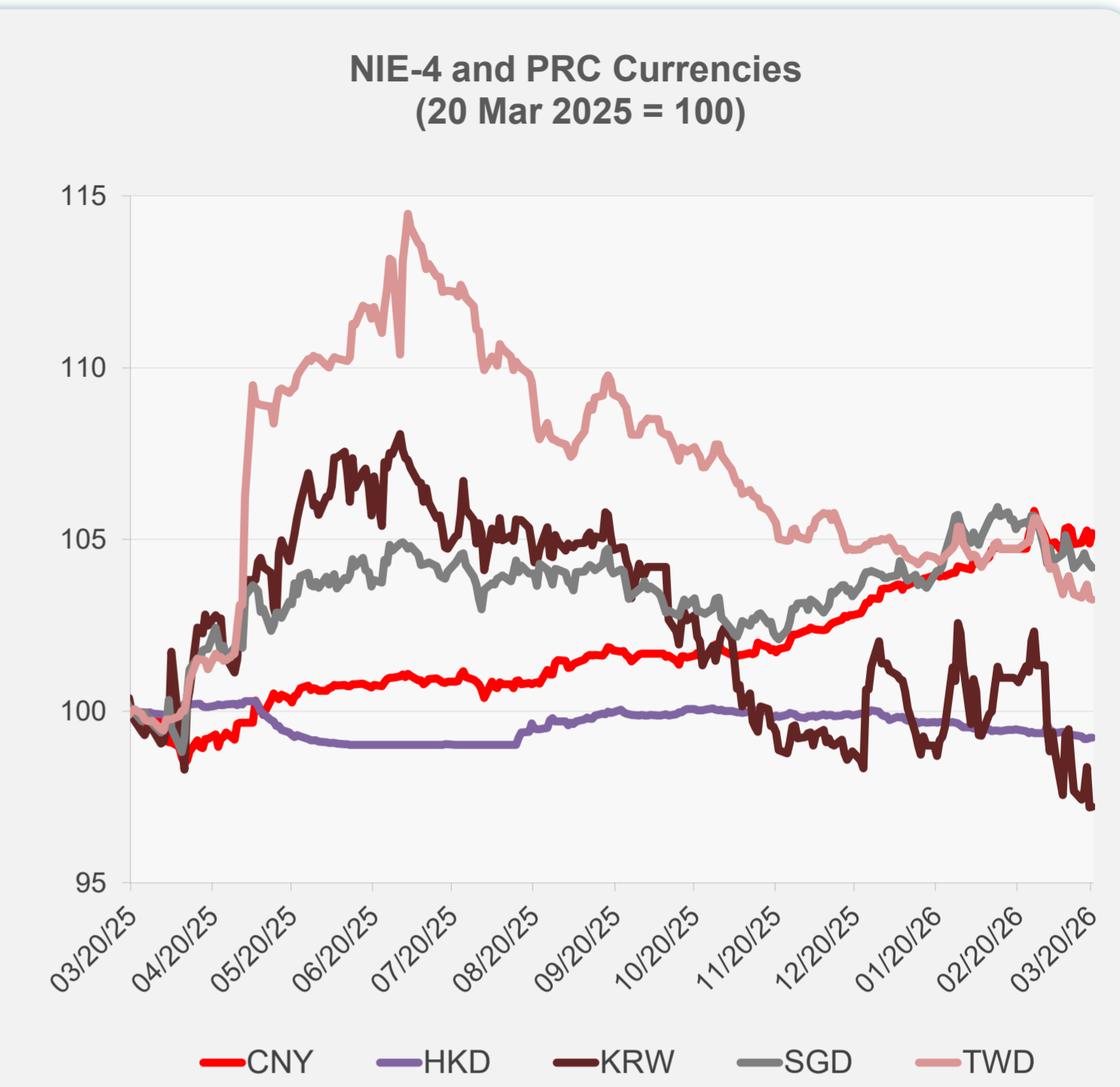
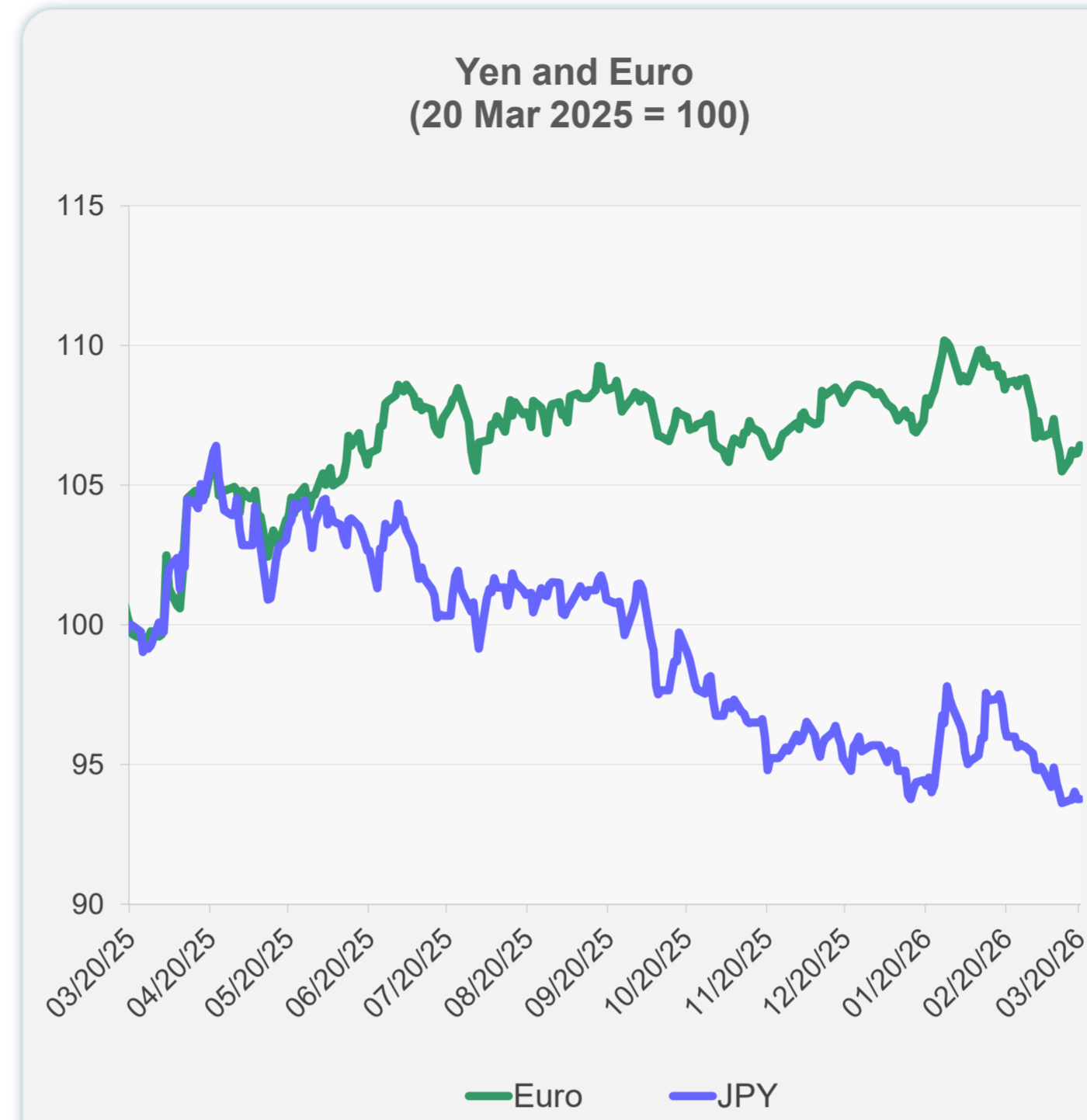
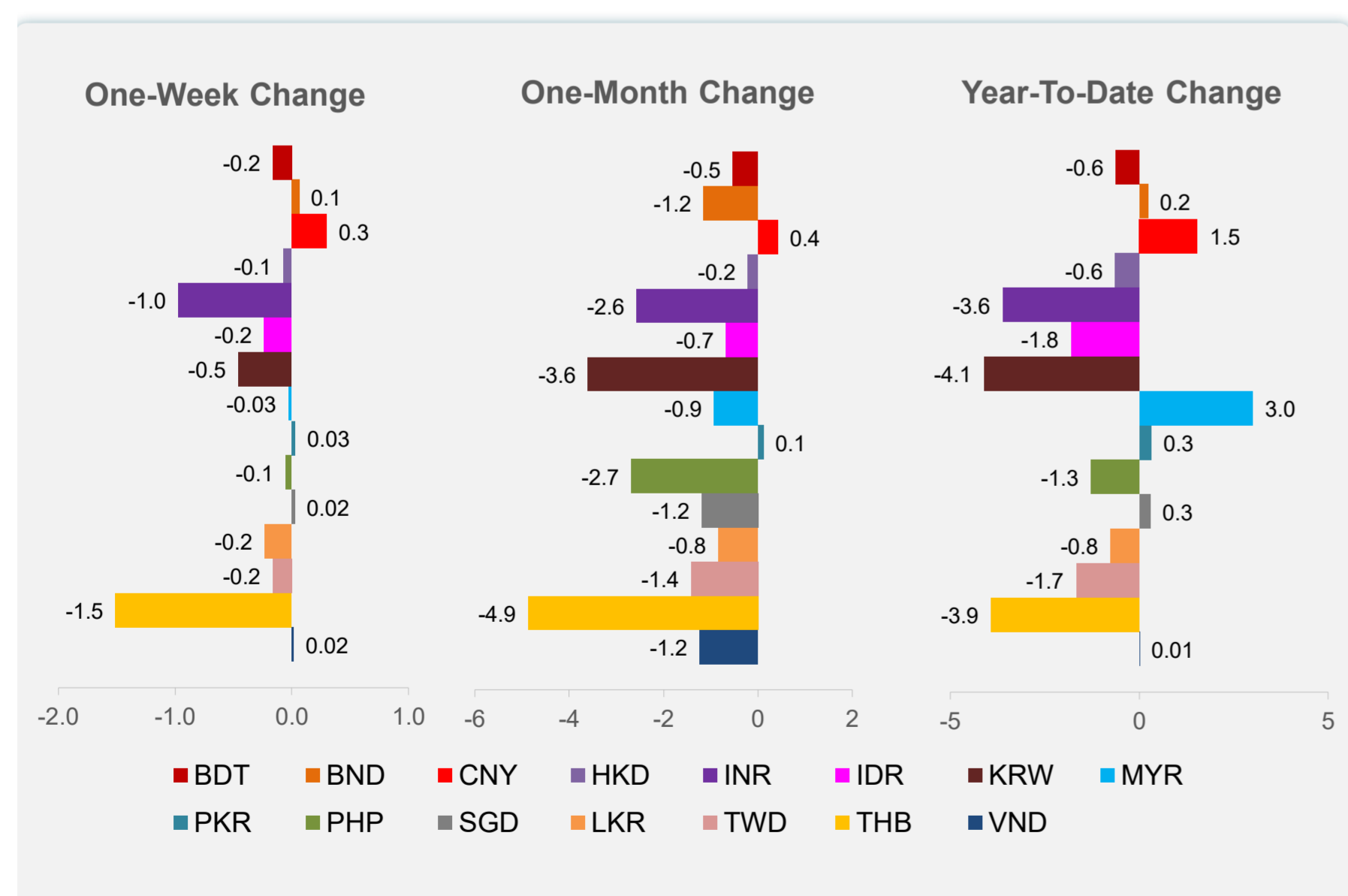
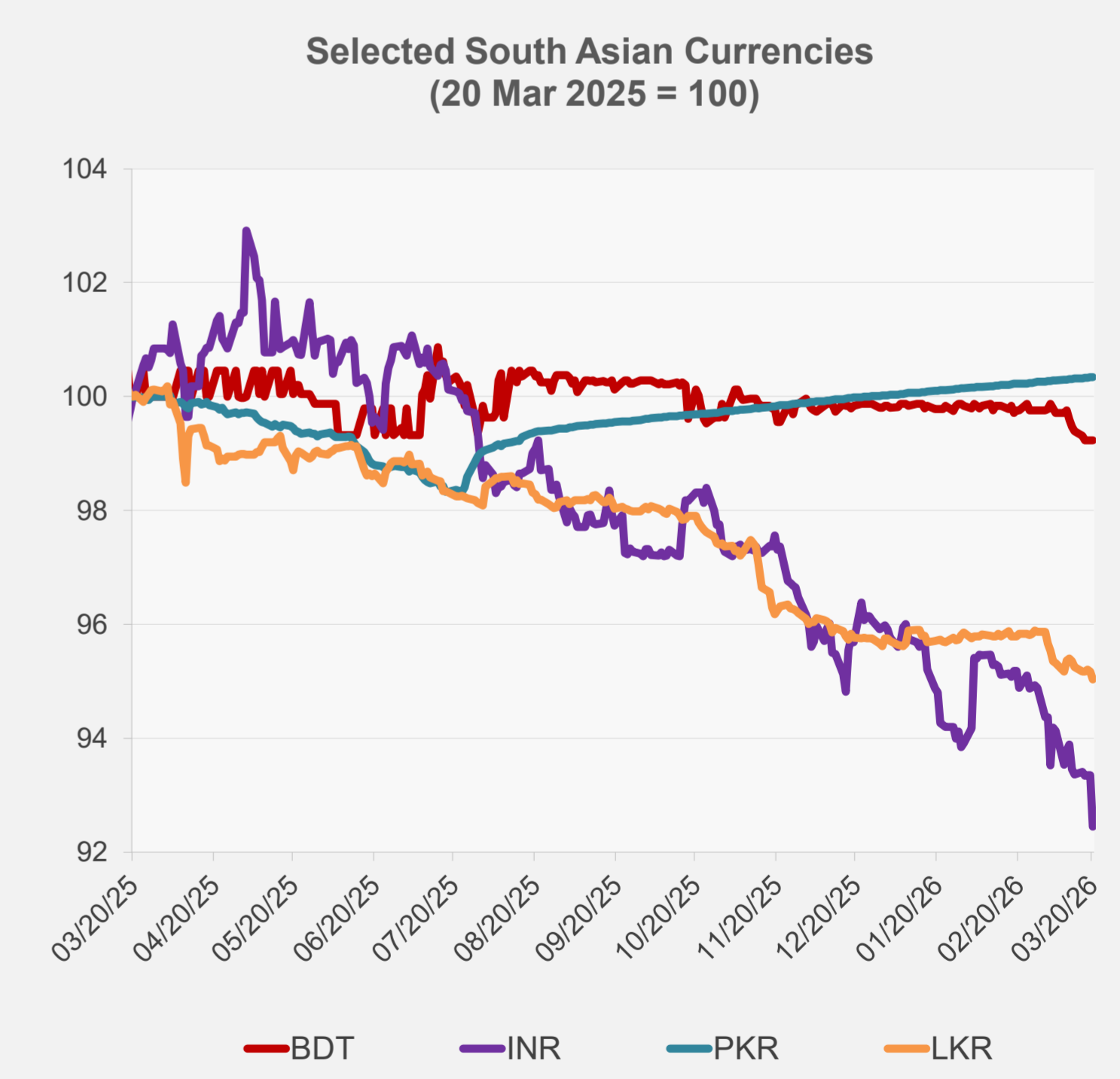
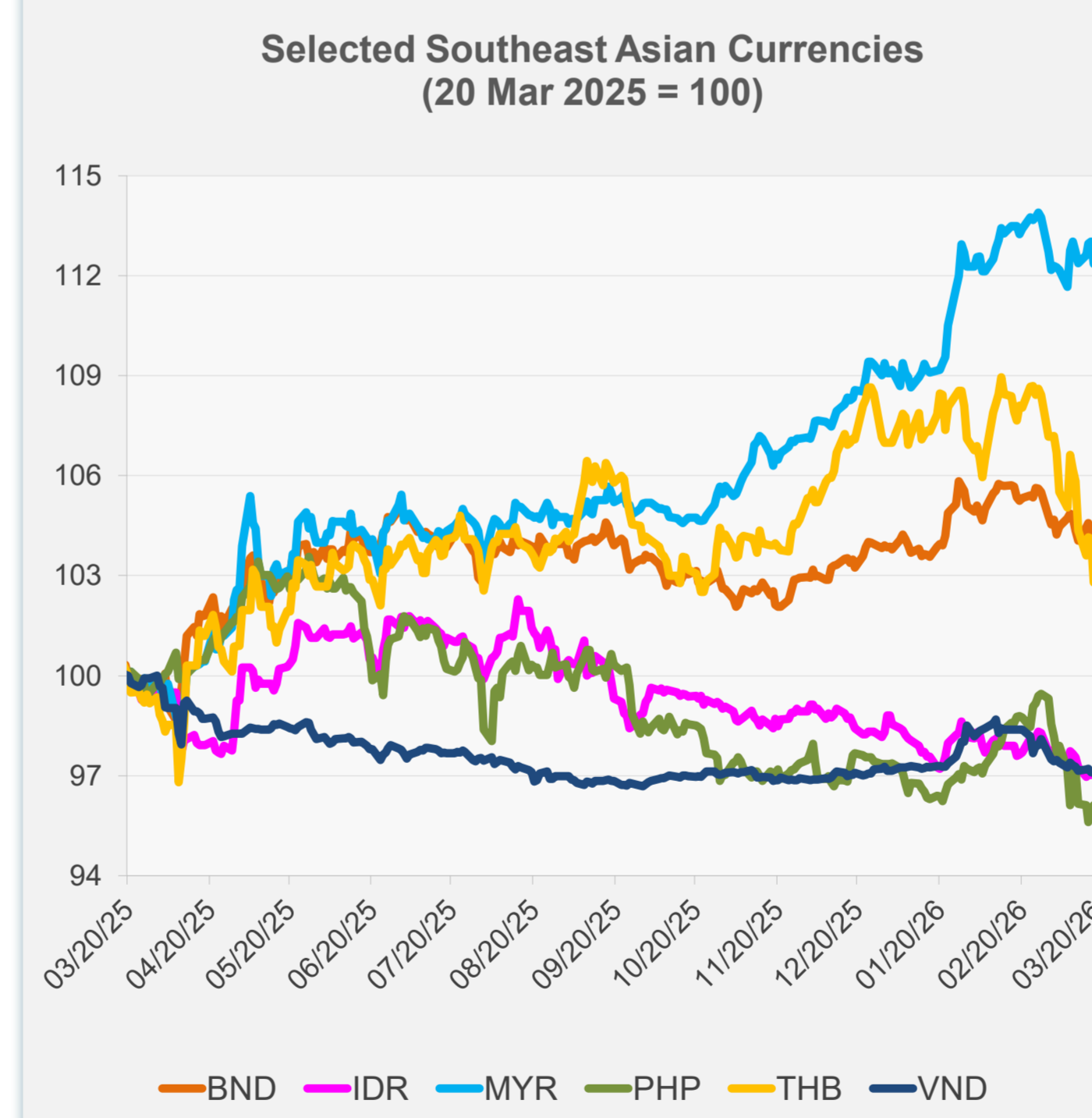


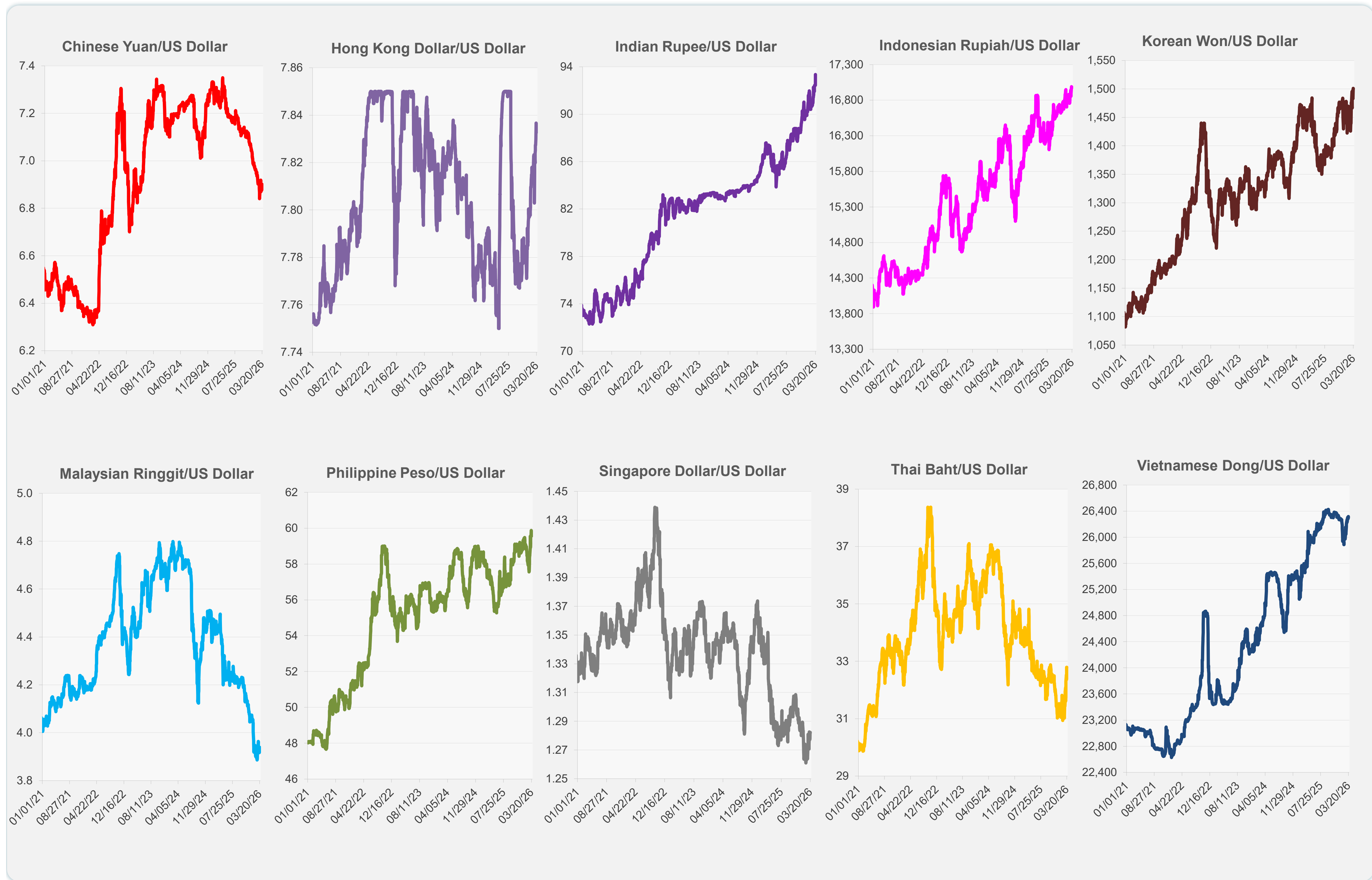
	Latest Closing	% change from Previous Day	% change from 01-Jan-26
Euro	0.87	0.27	-1.70
Japanese yen (JPY)	159.21	0.00	-2.03
Bangladeshi taka (BDT)	123.00	0.00	-0.61
Brunei dollar (BND)	1.28	-0.36	0.23
Chinese yuan (CNY)	6.88	0.28	1.54
Hong Kong dollar (HKD)	7.83	0.01	-0.63
Indian rupee (INR)	93.35	-0.96	-3.61
Indonesian rupiah (IDR)	16,980.00	0.00	-1.80
Korean won (KRW)	1,500.60	0.03	-4.11
Malaysian ringgit (MYR)	3.94	0.00	3.01
Pakistan rupee (PKR)	279.22	0.00	0.32
Philippine peso (PHP)	59.56	0.00	-1.27
Singapore dollar (SGD)	1.28	-0.09	0.29
Sri Lanka rupee (LKR)	311.95	-0.14	-0.75
Taipei,China NT dollar (TWD)	31.97	-0.05	-1.66
Thai baht (THB)	32.79	0.00	-3.92
Vietnamese dong (VND)	26,298.00	0.08	0.01



NIE = Newly Industrialized Economies



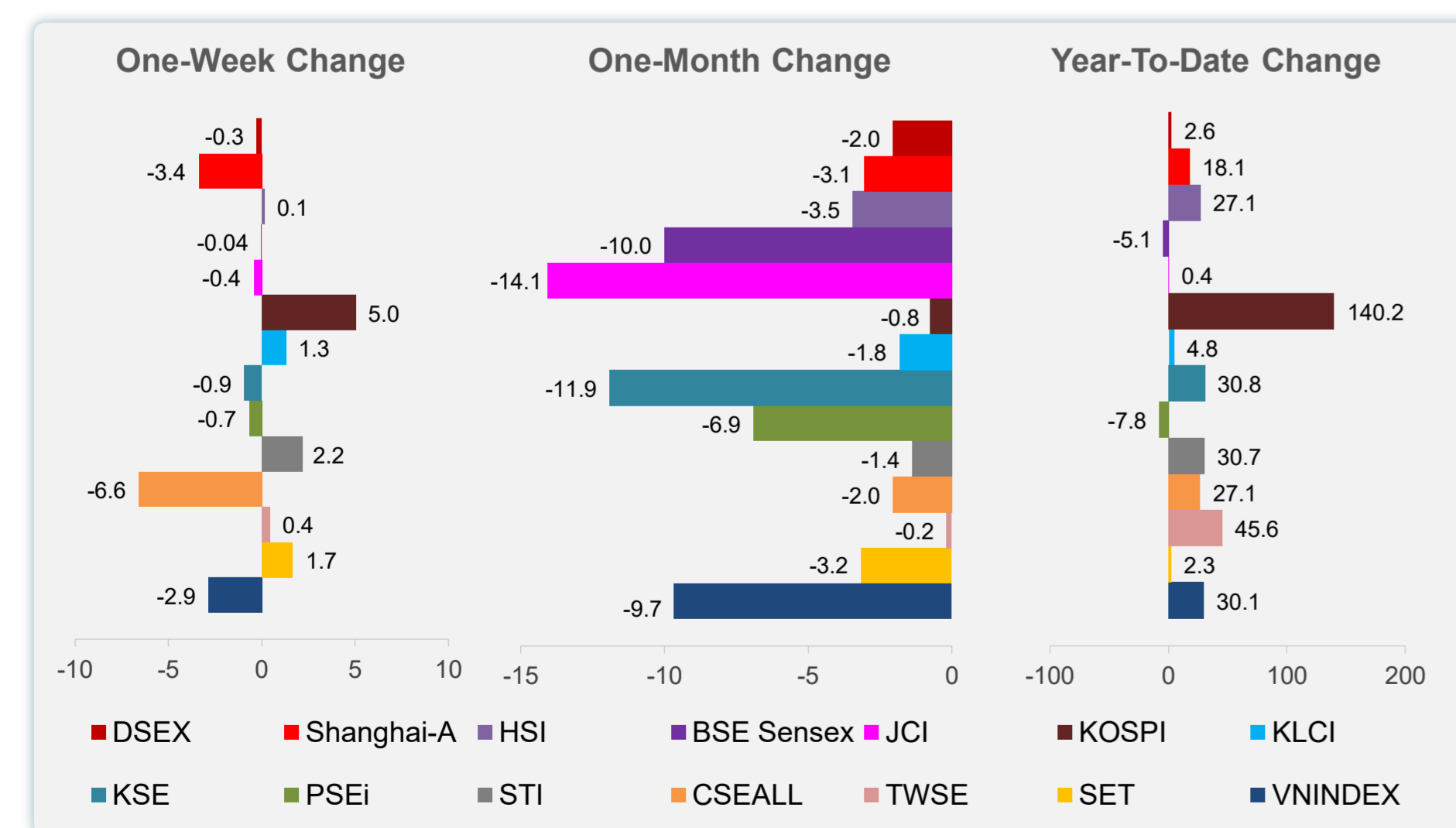
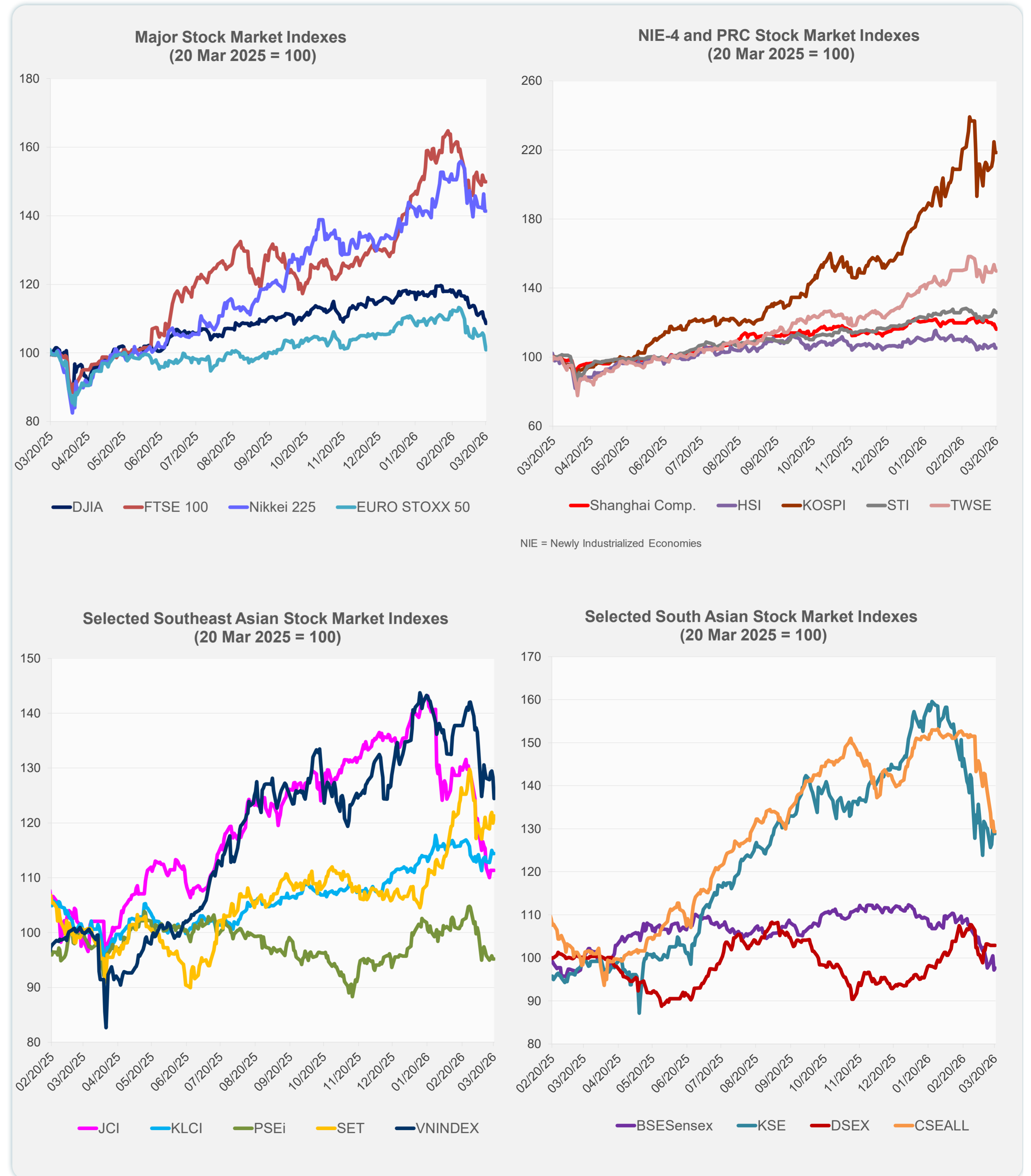
Note: Negative/Decreasing values indicate depreciation of local currency, and positive/increasing values indicate appreciation.
Source: ADB calculations using data from Bloomberg and Haver Analytics.



Source: Haver Analytics.

Daily Market Watch STOCK INDEXES

	Latest Closing	% change from Previous Day	% change from 01-Jan-25
US Dow Jones Ind Avg	45,577.47	-0.96	7.13
US NASDAQ	21,647.61	-2.01	12.10
US S&P 500	6,506.48	-1.51	10.62
UK FTSE 100	13,047.72	0.00	59.64
EURO STOXX 50	5,501.28	-2.00	12.36
Japan NIKKEI 225	53,372.53	0.00	33.78
Bangladesh DSEX	5,353.94	0.00	2.60
PRC Shanghai Comp.	3,957.05	-1.24	18.06
Hong Kong, China HSI	25,500.58	0.00	27.12
India BSE Sensex	74,532.96	0.44	-5.06
Indonesia JCI	7,106.84	0.00	0.38
Korea, Rep. of KOSPI	5,763.22	0.00	140.19
Malaysia KLCI	1,720.71	0.00	4.77
Pakistan KSE 100	153,083.70	0.00	30.83
Philippines PSEi	6,018.62	0.00	-7.81
Singapore STI	4,948.87	-0.38	30.66
Sri Lanka CSEALL	20,264.01	0.00	27.09
Taipei, China TWSE	33,543.88	-0.43	45.62
Thailand SET	1,432.99	1.10	2.34
Viet Nam VNINDEX	1,647.81	-3.02	30.08



Sources: ADB calculations using data from Bloomberg and CEIC Data Company.



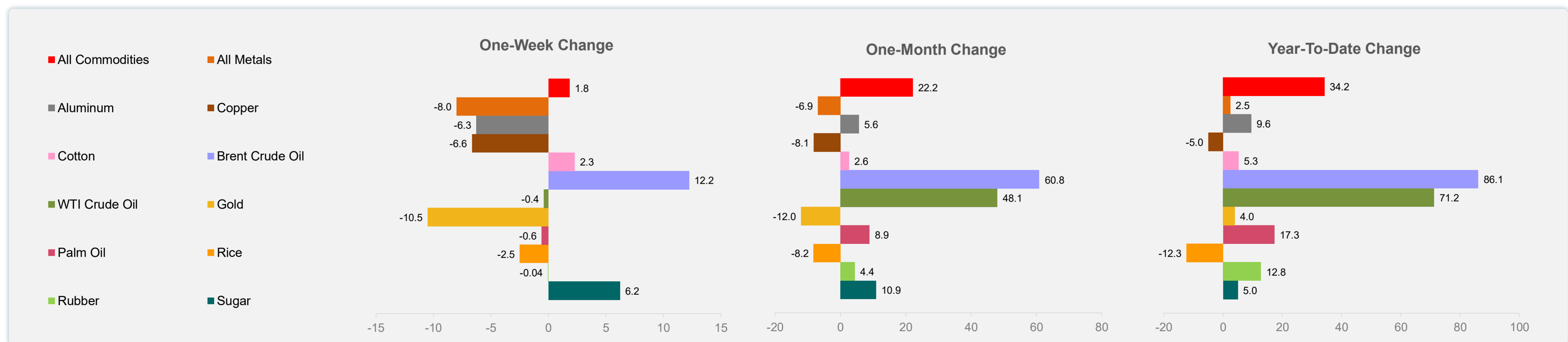
Sources: ADB calculations using data from Bloomberg and CEIC Data Company.

Daily Market Watch
COMMODITY PRICES

23 March 2026, 9:00 AM Manila

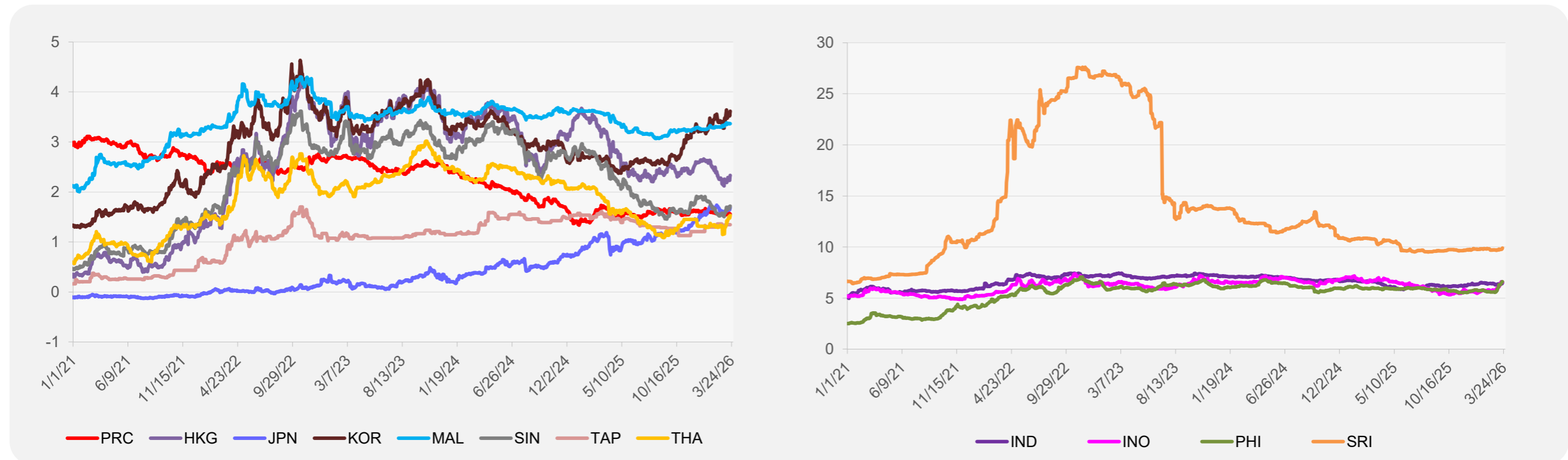
	Unit	Latest Closing	% change from Previous Day	% change from 01-Jan-26
S&P All Commodities	US\$	736.15	1.18	34.21
S&P All Metals	US\$	454.86	-0.96	2.50
Aluminum	US\$/metric ton	3,252.58	-1.13	9.59
Copper	US\$/metric ton	11,834.73	-1.76	-4.97
Cotton	US cents/lb	65.31	-0.55	5.30
Brent Crude Oil	US\$/barrel	116.24	-0.15	86.15
WTI Crude Oil	US\$/barrel	98.32	2.27	71.23
Gold	US\$/troy oz	4,492.42	-3.39	4.01
Palm Oil	US\$/metric tonne	1,136.38	0.00	17.32
Rice ¹	US\$/metric ton	391.00	0.00	-12.33
Rubber ²	US\$/kg	242.50	-1.38	12.79
Sugar	US cents/lb	15.53	0.00	5.00

¹ Latest closing price from 18 March 2025.
² Singapore Exchange, Ribbed Smoked Sheet Rubber.

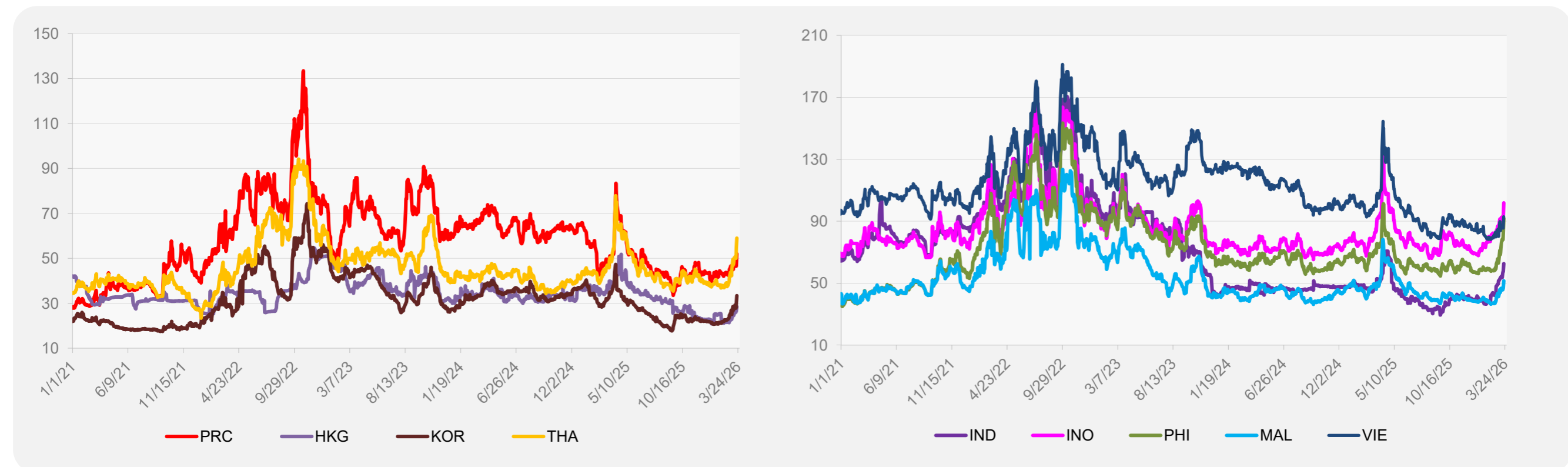


Source: ADB calculations using data from Bloomberg.

5-YEAR LOCAL CURRENCY GOVERNMENT BOND YIELDS (%)



5-YEAR CREDIT DEFAULT SWAP¹



¹ In USD and based on sovereign bonds.
Source: ADB calculations using data from Bloomberg.